

HB101 Conventional Electric Alarm Bell

BEFORE INSTALLING

NOTICE: This manual should be left with the owner/user of this equipment.

SPECIFICATIONS

- Voltage ranges: 22vdc to 26vdc (Rated voltage: 24vdc)
- Power and current consumption: 0.5W, 18ma@26vdc(maximum)
- Number of standard: EN54-3
- Sound level: 85dB (A) @1M (minimum)
- Bell Tone: 4500 Hz Continuous
- Service Use: Fire alarm, general signaling, burglar alarm
- IP ratings: IP21C
- Environment type: Type A (indoor)
- Input terminal Wire Gauge: 0.28 mm² to 1.5 mm²
- Operating Temp.: -10°C to +55°C
- Operating Humidity Range: 10% to 93% Relative Humidity (Non-condensing)
- Material of cover: Aluminum
- Dimension: 150mm×55mm (D*H)
- Weight: Net Weight 380g, Gross Weight 420g

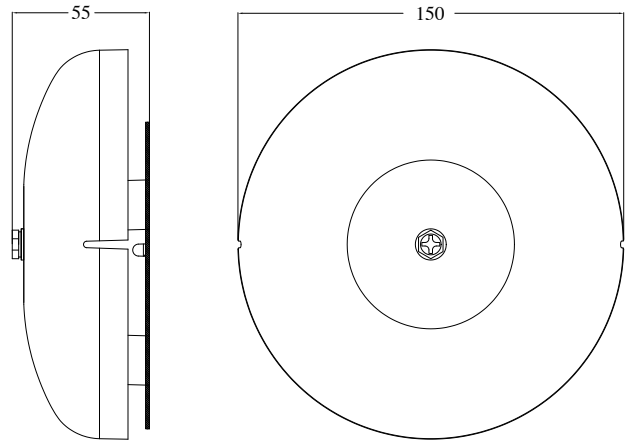


Figure1: Fire Alarm Bell

Structure

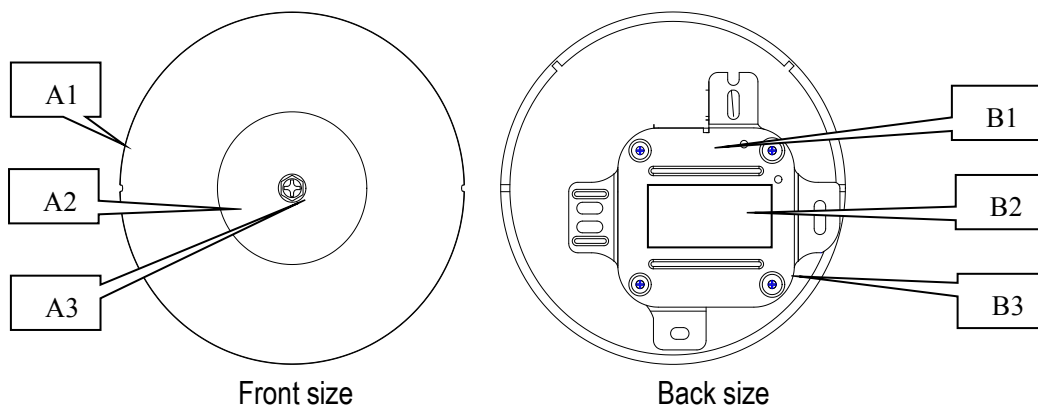


Figure2: The Structure Of Fire Alarm Bell

Label	The name of component
A1	Cover of bell
A2	Label of front
A3	Screw of fixed
B1	Mounting bracket
B2	Label on bracket
B3	Enclosure

Terminal designations

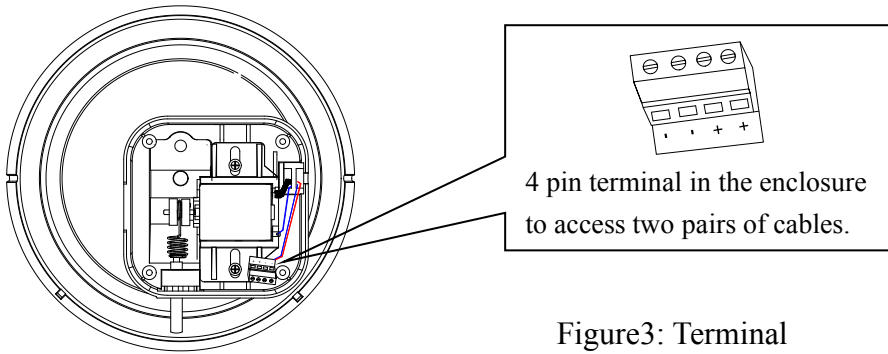


Figure3: Terminal

General Description

The bell remains the most commonly used alarm for fire evacuation system, for wall applications, indoors.

They are designed to be used in 24 volt DC systems.

Wiring

The system designer must make sure that the total current drawn by the devices on the loop does not exceed the current capability of the panel supply, and that the last device on the circuit is operated within its rated voltage.

When calculating the voltage available to the last device, it is necessary to consider the voltage drop due to the resistance of the wire. The thicker the wire, the smaller the voltage drops. Wire resistance tables can be obtained from electrical handbooks.

Installation and Connect wire of power supply

NOTE: 1.All wiring must conform to applicable local codes, ordinances, and regulations.

2. Mounting Indoor Wall Products.

Step1: Connect the wires from panel to the terminal of bell (see figure4).

Step2: Attach mounting bracket to the wall (see figure5).

Step3. Locking the screw with cover of bell (see figure6).

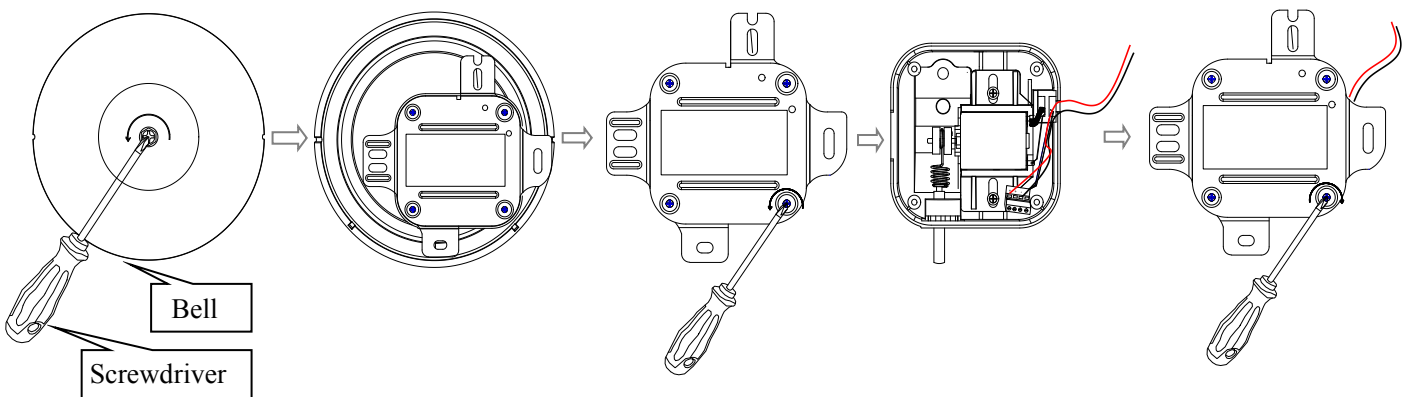


Figure4: Connect wires to terminal of bell

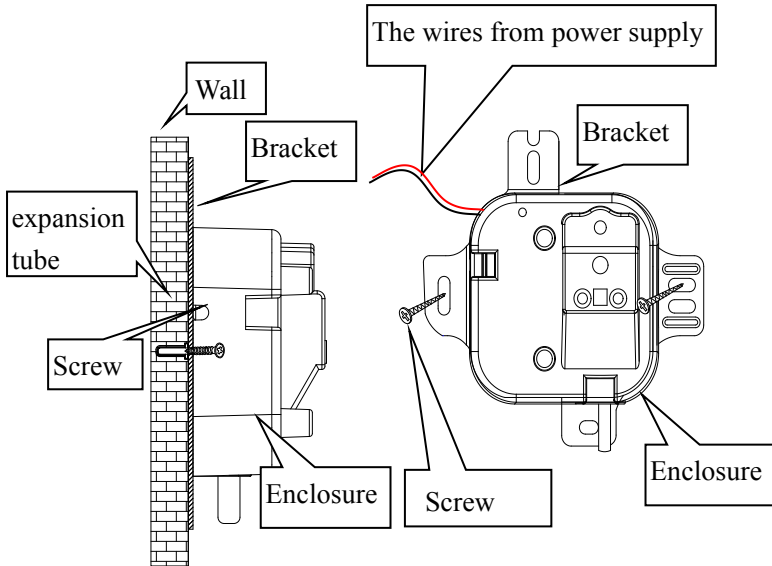


Figure5: Mounting the bracket and install bell

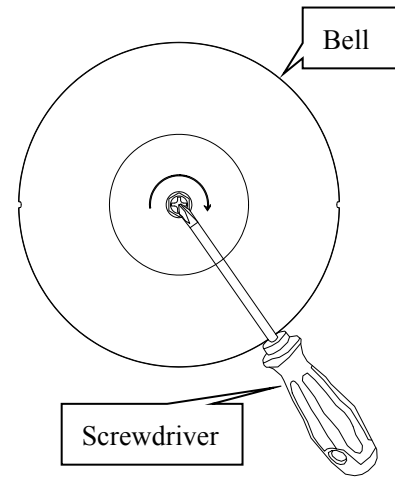


Figure6: Locking the screw with cover of bell

MAINTENANCE

This bell must be tested and maintained regularly.

Before testing, notify the proper authorities that the system is undergoing maintenance, and will temporarily be out of service. Disable the system to prevent unwanted alarms.

The bell be cleaned at least once a year. Use a vacuum cleaner to remove dust from the cover.

LIMITED WARRANTY

We warrants the bell to be free from defects in materials and workmanship under normal use and service for a period of three years from date of manufacture.

The Company's obligation of this Warranty shall be limited to the repair or replacement of any part of the bell which is found to be defective in materials or workmanship under normal use and service during the three year period commencing with the date of manufacture.

After phoning HST technical support number for a Return Authorization number, send defective units postage prepaid to HST local representative office. Please include a note describing the malfunction and suspected cause of failure. The Company shall not be obligated to repair or replace units which are found to be defective because of damage, unreasonable use, modifications, or alterations occurring after the date of manufacture.

CE 17

0359

HLogic Security Technology Co.,Ltd,
4F,Buiding B1,XinHaoSheng High-Tech Park,YongHe
Road FuYong Town,Baoan District,ShenZhen,China

17

7033CPR2016-05-16

EN54-3

HB101 Conventional Electric Alarm Bell

Fire detection and fire alarm systems installed in and around buildings.