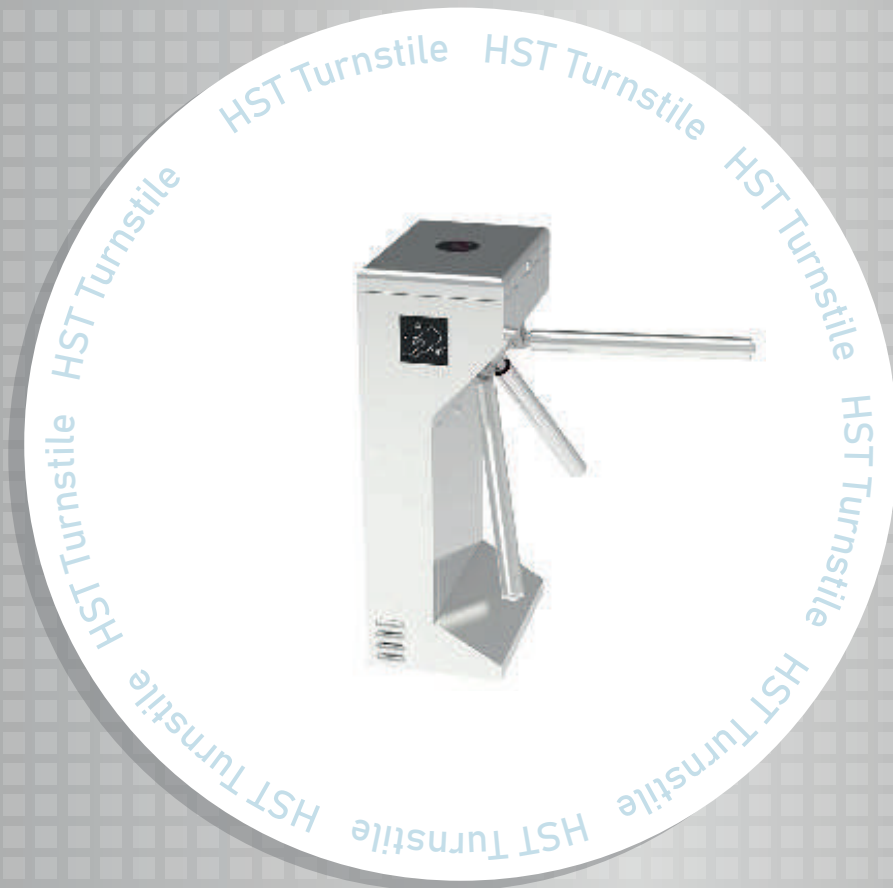


# HST<sup>®</sup>

## HST Turnstile VT1000



**MORE THAN SECURITY**

[www.hlogicgroup.com](http://www.hlogicgroup.com)



Model:- VT1000

## Technical Parameter

Size	980*330*420mm
Material	Top 1.2mm+Body 1.0mm SUS304
Pass Width	500-550mm
Passage direction	Single directional/Bi-directional
Pass rate	30-35 persons/minute
Operating time	0.2 seconds
Power input	AC100-240V,50/60HZ
Working voltage	24V
Working humidity	30%~95%
Working temperature	-40°C~+70°C
Working environment	Indoor/outdoor
Communication interface	RS485, Dry contact
Mechanism	Mould machine core+mould bracket+Domestic solenoid

## Description

All turnstile models are space efficient security barriers, with a compact design,yet offer sufficient space to integrate any access control system. They can be mounted with display, passage counter, card reader, token operation traffic lights, command console,alarm system against unauthorized entries,The unique dropping arm feature provides a fail safety solution in case of an emergency or power failure,Tproviding egress in case of crisis evacuations. Durability with minimal maintenance means years and millions of trouble free passages. The turnstile creates a secure environment in. for example, a reception area. Our turnstile are used in different applications including stadiums and arenas, perimeter and interior security, recreation and amusement parks, retail crowd control, transit fare collection and lobby access control.

## Features&Benefits

- Semi-auto mode:After reading card the passenger pushes the arm by hand until he goes through the barriers and the arm arrives in home position.
- Full-auto mode:The passenger pushes the arm at a little strength after reading card,and the arm will automatically rotate forward by motor power until the arm arrives in home position.



- Pure mechanical mode : The passenger pushes the arm by hand until he goes through the barriers.
- Single or bi-directional function in mechanical and electrical versions.
- Automatic reset of barrier arms after each passage.
- Cable or wireless remote control panel key override control for emergency situations. Automatically arm drop down when power off or emergency.
- Adjustable time out delay.

### Operating Modes

- Single passage in the set direction
- Bi-directional single passage
- Free passage in the set direction
- Always free or locked